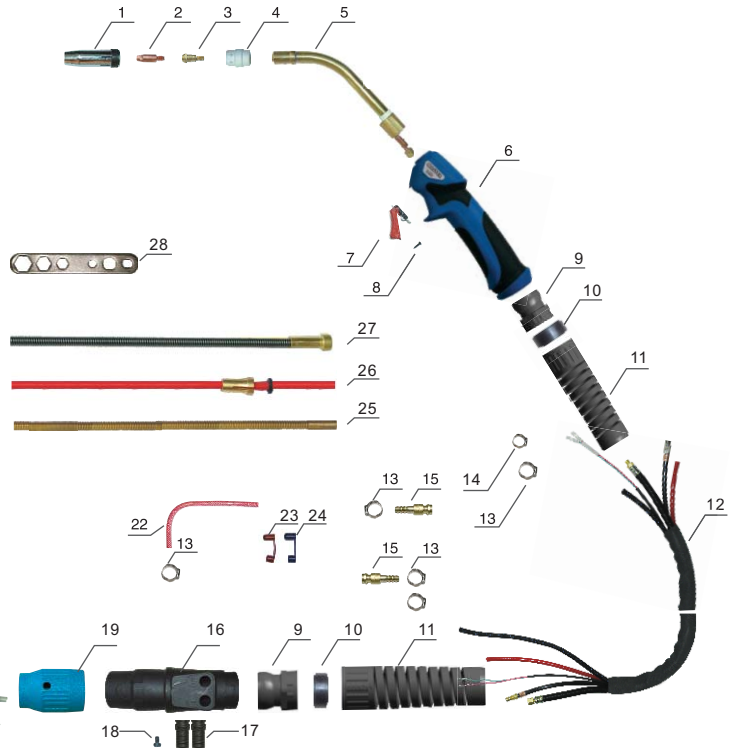


TORCH 240



Technical data 技术参数

Cooling 冷却方式	Water Cooled 水冷
Duty cycle 100% 暂载率100%	300Amp CO ₂ , 270Amp MIX
Wire Size 焊丝直径	Φ 0.8-1.2mm



Position	Code	Ref.	Description
1	ICS0806	145.0080	Gas nozzle Φ 12.5mm; 喷嘴 Φ 12.5mm
2	ICU0003-10	140.0253	Contact tip Φ 1.0mmE-CU/M6x25; 导电嘴 Φ 1.0mm/M6x25mm
3	ICU0683	142.0003	Contact tip holder M6x26mm; 导电嘴座/M6x26mm
4	ICF0539		White ceramic gas diffuser; 白色陶瓷分流器 24KD
5	ICI0091	023.0001	Torch head 240; 枪颈 240
6	ICV0890		MIG handle Blue/Grip; MIG手柄/蓝色
7	IHQ0070	185.0031	Trigger; 焊枪用开关
8	IFT0874		Screw M3x10; 螺丝 M3x10
9	IHJ0021		Joint for MIG handle; MIG手柄用球头
10-1	IHJ0852		HOUSING RING/BIG/INSIDE; 锁紧内环/大
10-2	IHJ0855		HOUSING FOR PLASMA BACK BOX/BIG; 等离子后把套用锁紧环/大
11	IFT0822		Spring for cable support; 电缆支撑弹簧
12	ICD0067		Cable assembly 3m 401D-501D; 水冷电缆组 3m/401D-501D
13	IFT0737	173.0001	Clamp Φ 9.5; 卡箍 Φ 9.5
14	IFT0734	171.0002	Clamp Φ 8.7; 卡箍 Φ 8.7
15	IZT8070	501.0114	Quick connector water Φ 6mm; 水冷快速插头 Φ 6mm
16	IHJ0763		Back box for water cooled; 水冷枪后把套
17	IHJ0764		Hose support for water cooled rear box; 水冷枪后把套用水管支柱
18			Screw M4x6; 螺丝 M4x6
19	IHJ0072		Adaptor nut/Blue; 焊枪锁紧螺母/蓝色
20	ITB0057	501.2156	Euro central adaptor body/water cooling; 欧式水冷中央接头/水冷
21	IZT0071	501.0082	Liner nut; 送丝管锁紧螺母
22	IKH0605		Output water tube M5x8mm 0.8m Red; EPDM 编织管 M5x8mm 0.8m/红色
23	IHJ0306		Plastic support for water cooling connector /Red; 水堵/红色
24	IHJ0308		Plastic support for water cooling connector /Blue; 水堵/蓝色
25	IIC0220		Brass terminal Φ 2.0x4.0mm 0.35m; 铜送丝管 Φ 2.0x4.0mm/0.35m
26	IIC0160	126.0005	Teflon liner Φ 2.0x4.0mm 3m Red; 特氟龙管 Φ 2.0x4.0mm/3m/红色
27	IIC0571	122.0031	Steel liner Φ 1.0-1.2mm 3m; 钢送丝管 Φ 1.0-1.2mm/3m
28	ICG6000		Spanner for MIG torches; MIG 焊枪扳手
Complete Torch			
	ICH2598-36		MIG 240 torch 3m euro adaptor/spring pins; 焊枪240/3m/弹性针
	ICH2599-36		MIG 240 torch 4m euro adaptor/spring pins; 焊枪240/4m/弹性针
	ICH2595-36		MIG 240 torch 5m euro adaptor/spring pins; 焊枪240/5m/弹性针

Link Welding Technology Co., Limited

Add: Rm. 19C, Lockhart Ctr., 301-307 Lockhart Rd., Wan Chai, Hong Kong.

Tel: +00852-6735 8659 Fax: +00852-3114 9072 Email: info@linkwelding.com